

Hook Bolt Installation Kit Instructions



Lewis Bolt & Nut Company
30105 6th Ave
La Junta, CO 81050
800-348-8098

Before Starting:

-Follow all railroad procedures for track safety, fall protection and any other applicable safety rules for working on a bridge deck.

-Be sure the area under the bridge is clear and that it is safe to drop a cable under the bridge. Any electrical equipment or moving equipment could create a hazardous situation.

-Be sure there is no one under the bridge that could be injured by falling equipment

Read these instruction completely and be familiar with the procedures for proper use of the Hook Bolt Installation Kit.

1. Gather all part of the kit together before starting installation.

Inspect the components of the kit for excessive wear or damage. Especially check the cable for fraying. Replace any damaged components before use.

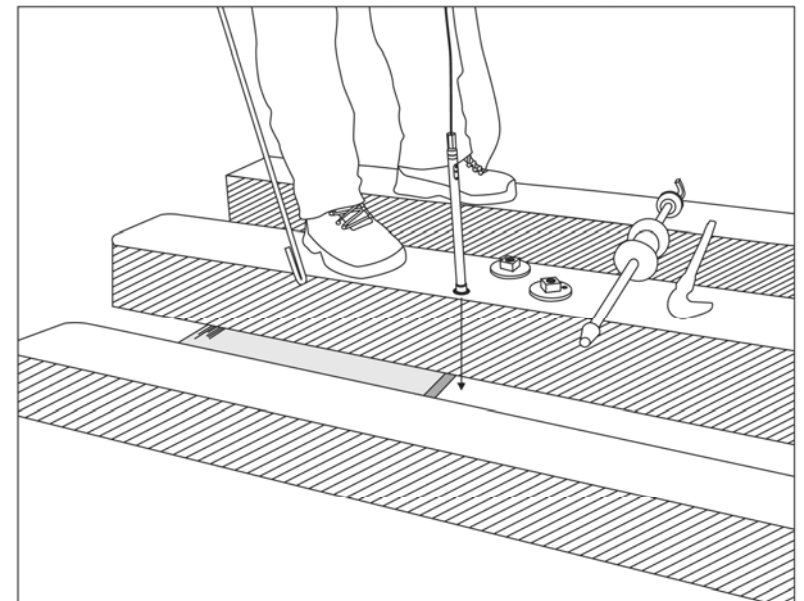
Assemble the hook by screwing the two halves together.

2. Drill a hole for the hook bolt.
(if not already present)

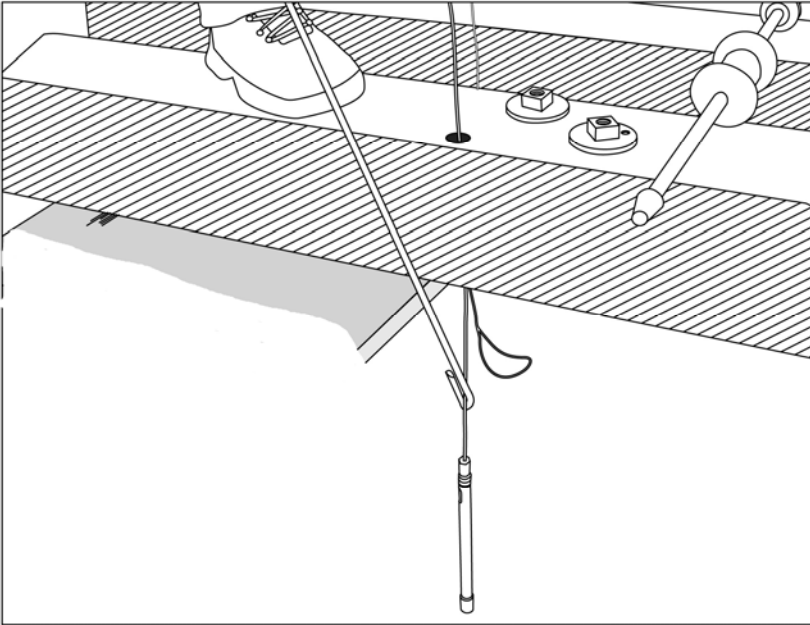
The hole should be $13/16''$ to $7/8''$ diameter

The hole should place the hook bolt as close as possible to the beam it will fasten to.

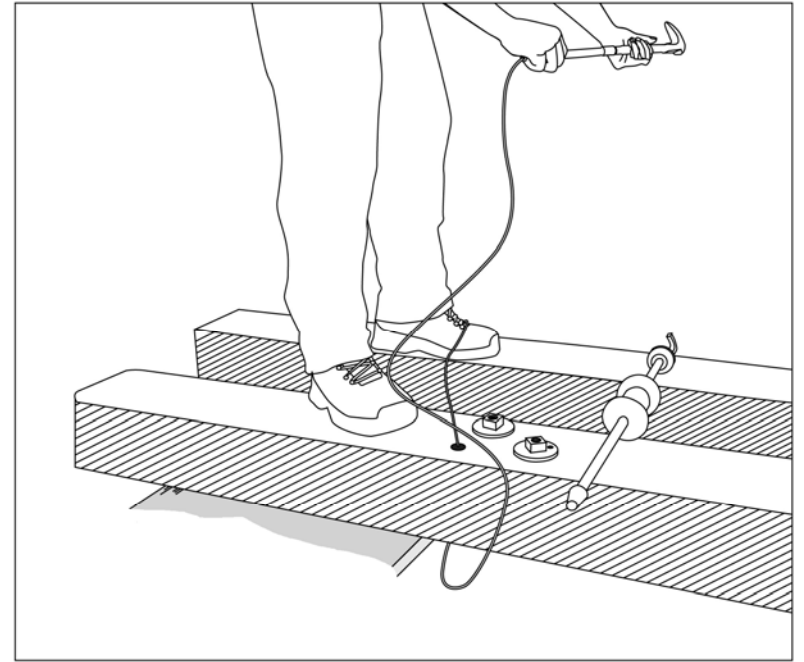
3. Thread the cable onto the end of the shaft
4. While holding the end of the cable securely, drop the shaft through the hole.



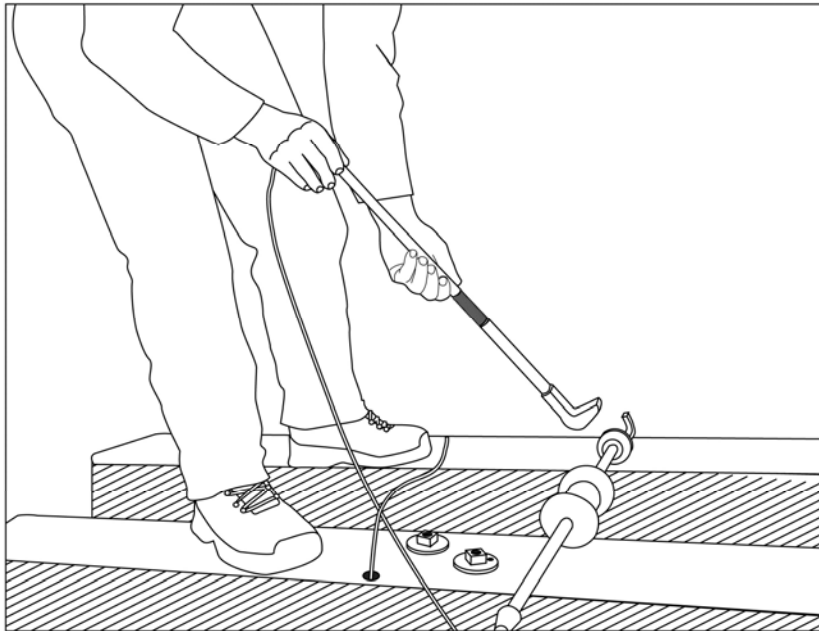
5. Use the hook to reach between the timbers and hook the cable. Pull the shaft and cable up between the timbers



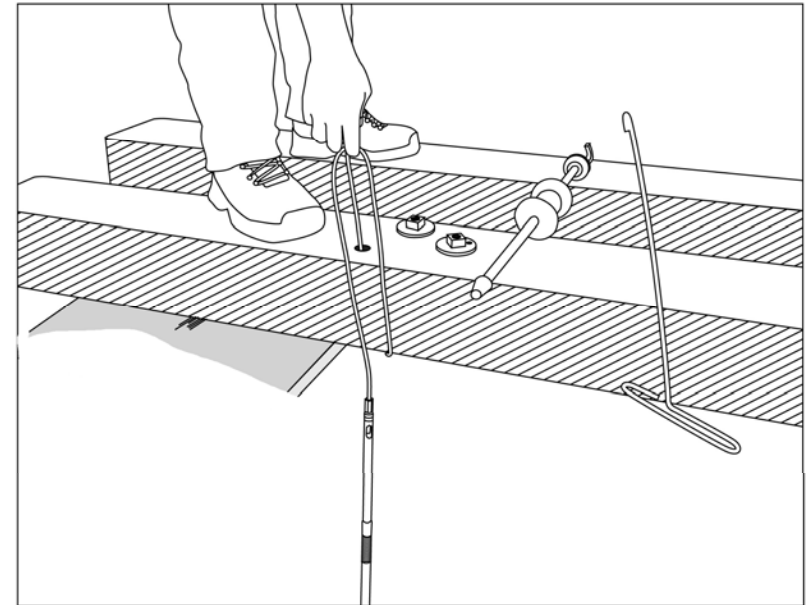
6. Thread the modified hook bolt into the large end of the shaft.



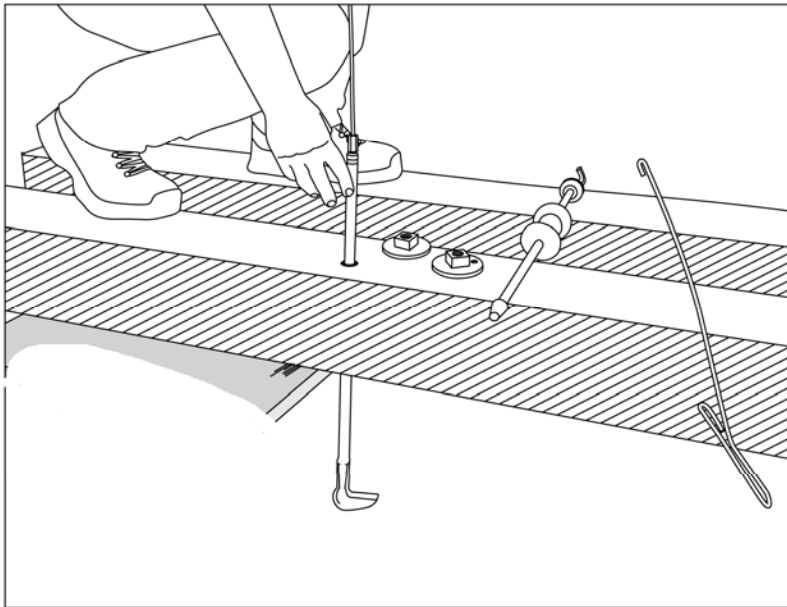
7. Adjust the index ring on the other end of the shaft to be inline with the hook of the hook bolt and tighten the nut to hold the index ring in place.



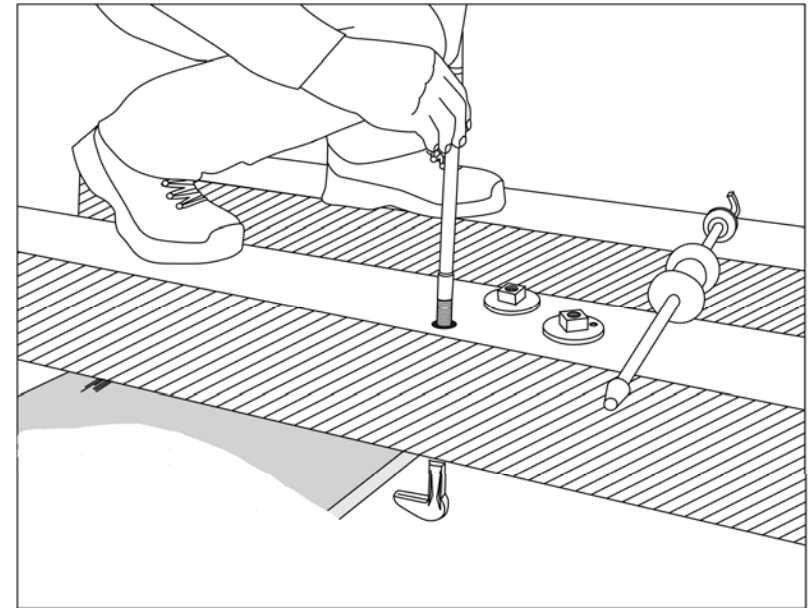
8. Holding the loose end of the cable securely, lower the shaft and hook bolt back down through the timbers.



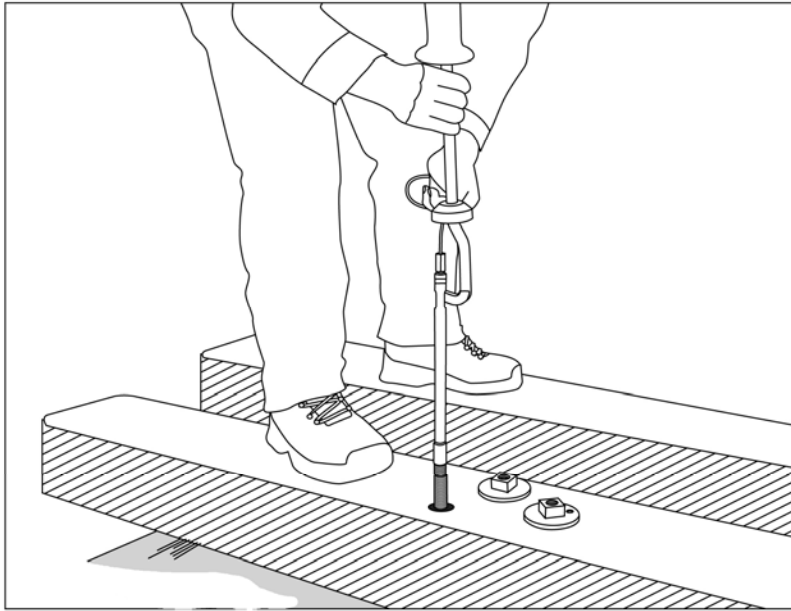
9. Using the cable, pull the shaft back up through the hole.



10. Once the shaft is through the hole, turn the shaft and hook bolt so that the mark on the index ring is facing the beam the hook bolt will hook onto. Pull the bolt as far up as possible by hand, finishing with a sharp tug to start the hook bolt's fins into the timber.



11. Slide the hook on the slide hammer into the slot on the shaft.



12. Use 3 or four blows with the slide hammer to draw the bolt up and seat the fins into the wood.

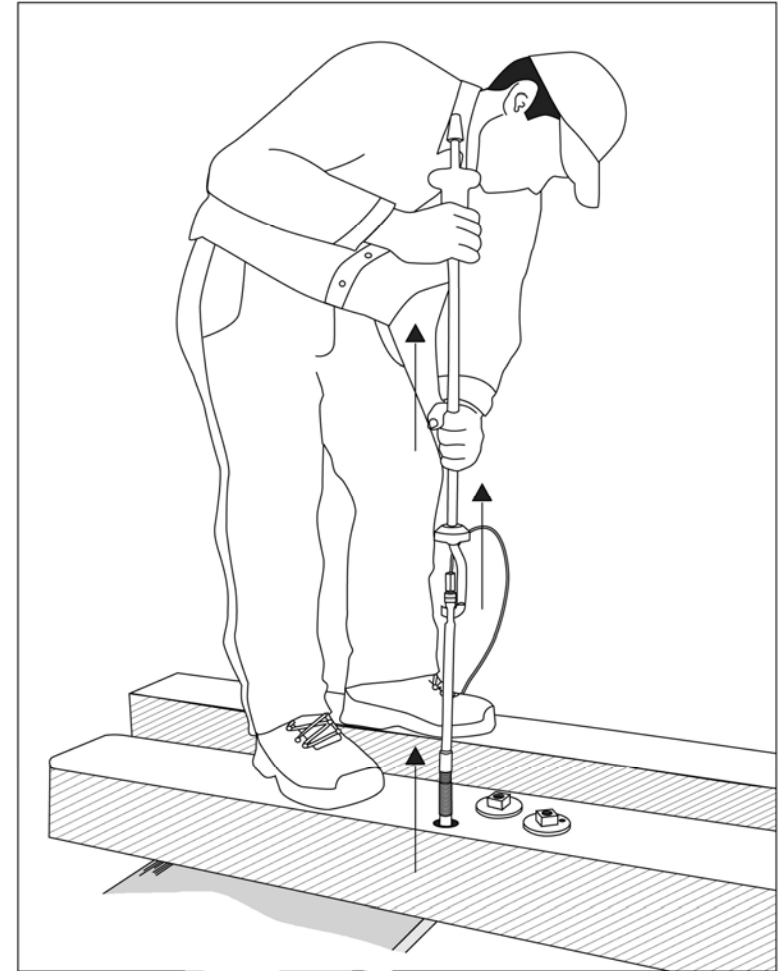
Use the slide hammer only enough to hold the bolt in place and make sure there is enough thread exposed to start a nut.

Set the slide hammer aside and remove the shaft from the hook bolt.

Install and tighten a nut until the bolt is fully seated.

Do not use a crane or winch to pull on the cable and/or shaft.

- 12.(cont) When using slide hammer, place one hand on the slide and the other between the guard rings below. Be careful not to get fingers in the way of the slide.



Excessive hammering may cause fatigue damage shorten the life of the shaft.